

NOTE:  
EACH LIGHT HAS ITS OWN NUMBER.  
PLACED UNDER EACH LUMINAIRE.

REV. 4/10

SECOND FIXTURE IF REQUIRED.

EACH LUMINAIRE TO HAVE ITS OWN ELECTRICAL  
CIRCUIT GOING UP THE POLE

AS NEEDED PHOTOCELL OR SHORTING CAP  
RATED FOR THE OPERATING VOLTAGE

PHOTOCELL 120/208/240/277 V ELECTRONIC.  
AREA LIGHTING RESEARCH, MODEL 2190VP3

PHOTOCELL 408 V ELECTRONIC.  
AREA LIGHTING RESEARCH, MODEL M-480

LAMP TO BE HIGH PRESSURE SODIUM, 250 WATT,  
ET18 OR ED18, MOGUL BASE, CLEAR, AND ALL POSITION  
PHILIPS C250S50/ALTO/CERAMALUX 36879-5 OR SYLVANIA  
LU250/ECO 67578 ONLY

KIM CAT. NO. 1A/ET2/250 HPS/MULTITAP/  
DB-P/A25 (LUMINAIRE) KSS25-4180-A-DB-P  
WITH BASECOVER (POLE)

OWNER SUPPLIED POLE WITH ISU IDENTIFICATION  
NUMBERS. SEE DETAIL B

#6 AWG BARE SOLID CU.  
CONNECT BOTH THE CIRCUIT GROUNDING  
CONDUCTORS & THE #6 AWG GND. WIRE TO THE  
POLE GROUNDING LUG.

OWNER TO FURNISH LUMINAIRE, POLE,  
BASE COVER AND POLE ID#S.  
CONTRACTOR SHALL PROVIDE CONDUIT, CABLES,  
GROUND ROD, PHOTOCELL OR SHORTING CAP, LAMP,  
AND PRECAST FOUNDATION WITH ANCHOR BOLTS.  
THIS CONTRACT TO ASSEMBLE AND SET COMPLETE ASSEMBLY.

ANCHOR BOLTS ARE 3/4" X 30" X 4"  
ANCHOR BOLT PROTRUSION IS 3 3/8"

CONNECT WITH CAD-WELD OR BURNDY  
TYPE YGHPC HYTAP CONNECTION

1 1/4" MIN SCH 40 PVC CONDUITS, AS REQUIRED.  
INSTALL 1 EA. EXTRA FOR FUTURE USE.  
CAP SPARE CONDUIT UNDERGROUND.

3/4" PVC SCHED 40 CONDUIT FOR GROUND

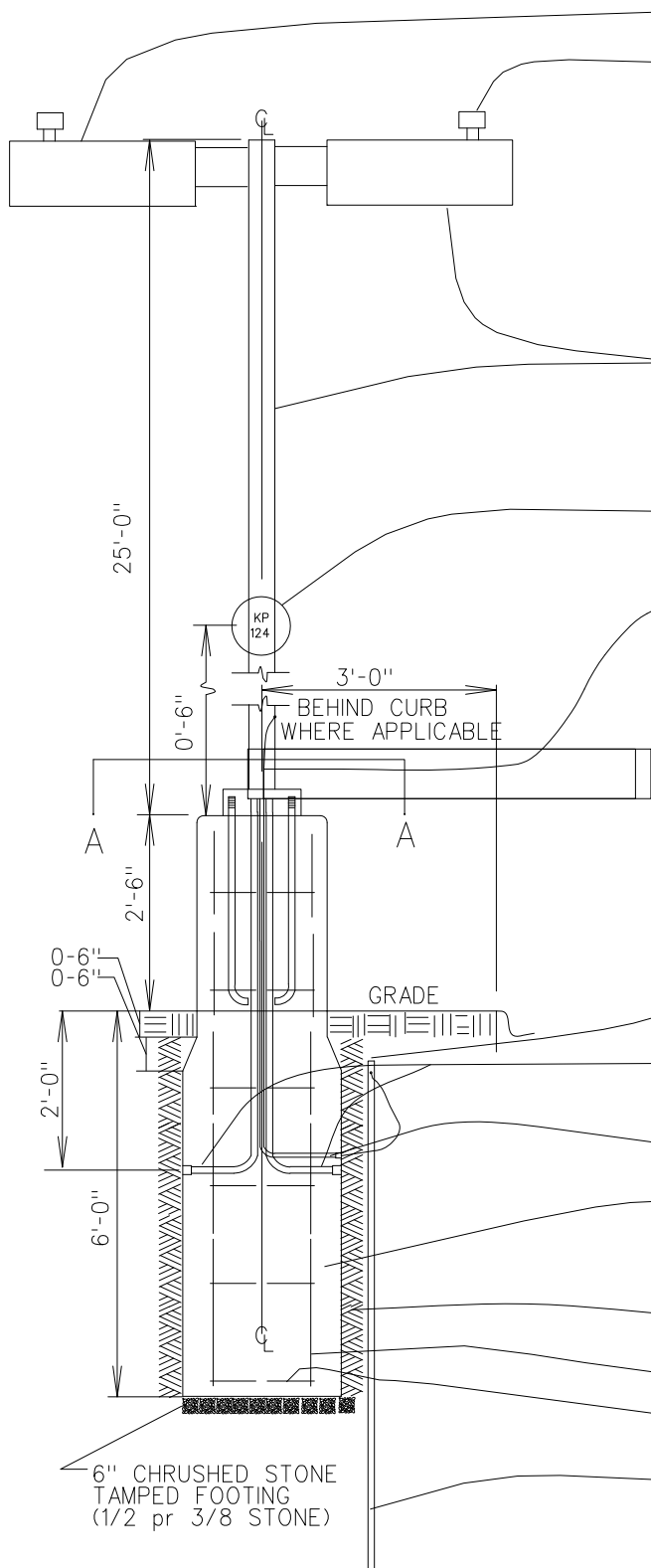
7000 PSI CONCRETE 24" DIA. PRE-CAST FOUNDATION  
(IOWA BASE, INC. PH 641-435-4159)  
ISUIAB 24" to 18" X 102" Rd  
FPM 6746.1338

BACKFILL VOIDS WITH 1/4" OR SMALLER  
CRUSHED CONCRETE,  
POWER TAMPED IN 6" INCREMENTS.

4 - #4 CORNER RODS

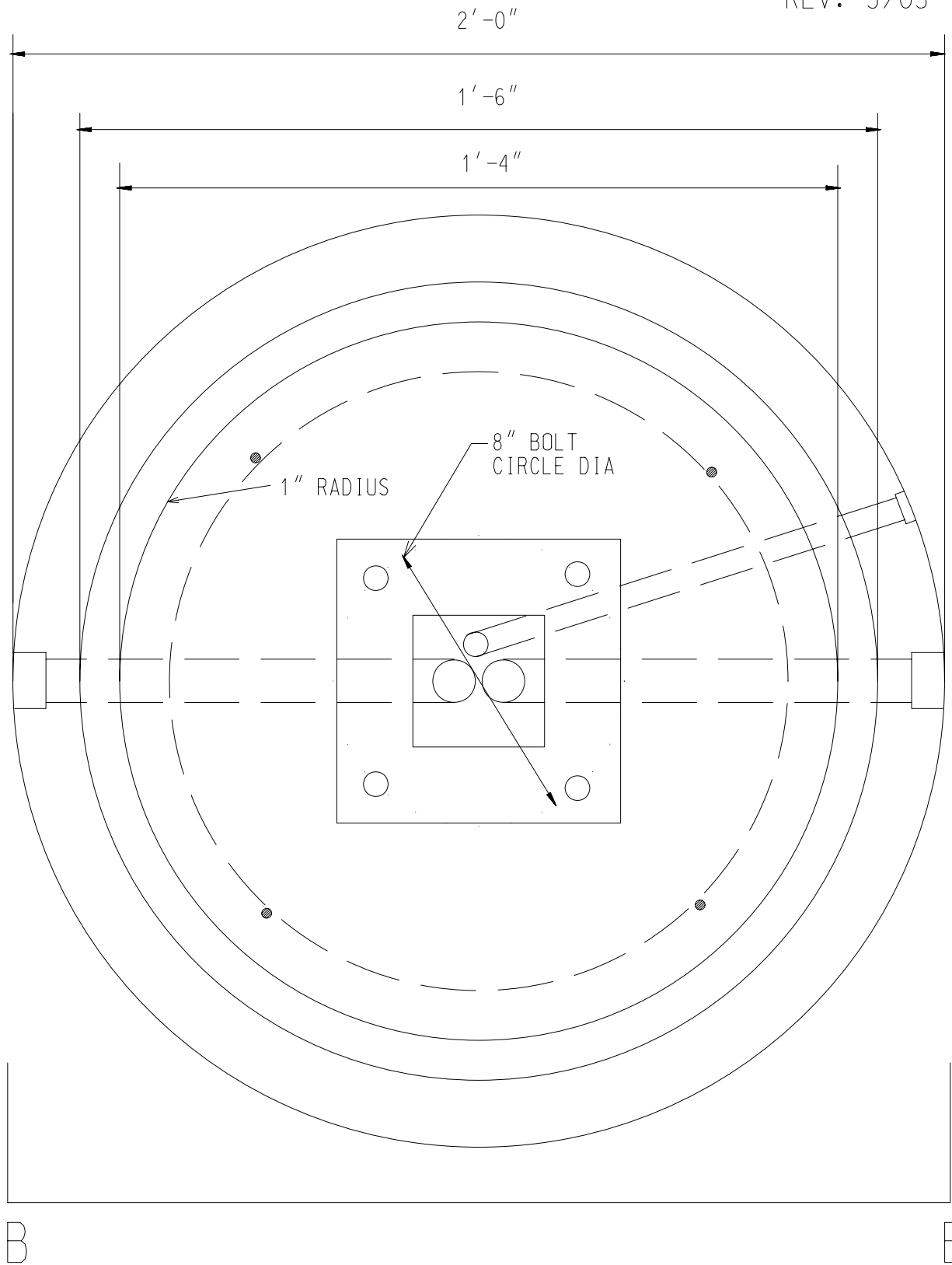
#2 TIES @ 1'-3" O.C.

5/8" X 10'-0" GND. ROD

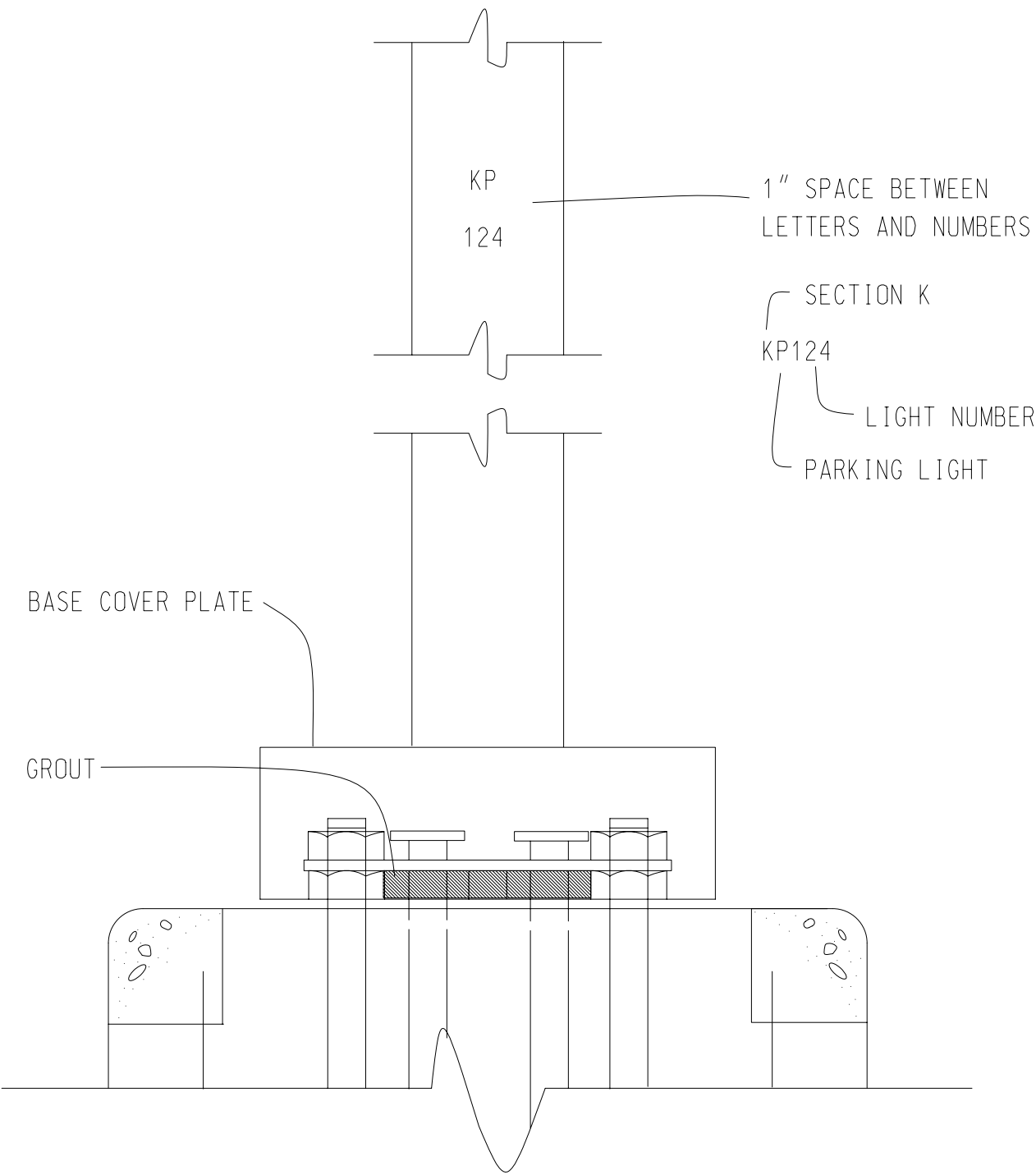


STANDARD PRE-CAST FOUNDATION DETAIL

## STANDARD 25' PARKING LOT LIGHTING



PLAN VIEW  
SECTION A



DETAIL B